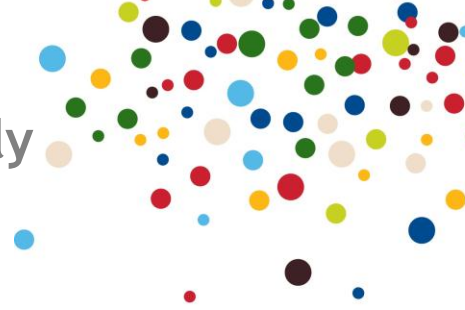




Proud to be part
of local life

Telex - Not Available for New Supply



1. Service Description

- The provision of Telex communication with protocols for answer back confirming identity.
- Punched Ticker-Tape receipt, which codes text and destination or origin of the message.
- V24 interface for communications with other equipment.
- Automatic dialling, transmission and repeat attempts.
- Short codes for commonly used numbers.
- Stand-alone telex terminal converging with PC telex.

2. Charging Structure - Connection Charges *

Please note that Telex is no longer available for new supply.

Description 01/01/2010		Connection Charge	
		Ex VAT	Inc. VAT
Permanent Service - New Lines		£92.00	£110.40
Temporary Service			
Infrequently Used Sites	First Month or Part	£92.00	£110.40
	Each Additional Month	£92.00	£110.40
Frequently Used Sites	Each Week or Part, up to 4 Weeks	£92.00	£110.40
	Each Additional Month or Part	£92.00	£110.40
Installations Taken Over with no alterations		£20.00	£24.00
Additional Charges for Alterations			
Change of Telex Answerback at Customer's Request		<u>£37.00+</u>	<u>£44.40+</u>
Change of Number at Customer's Request		£22.00	£26.40
Internal Removal - Line Only		<u>£35.00+</u>	<u>£42.00+</u>
Restoration of Service after Suspension (Non-Payment)			
First Line		£22.00	£26.40
Each Additional Line suspended at the same time		£12.00	£14.40

+ An additional engineer visit charge may be applicable, see the [time related charges](#) section for this charge. Only one engineer visit charge should be raised against multiple provisions of items which attract a engineer visit charge.

* In certain circumstances, where extensive new construction is required in order to provide a customer with service, additional charges may apply.



Proud to be part
of local life

Telex - Not Available for New Supply



3. Rental Charges 1

Please note that Telex is no longer available for new supply.

Description 01/01/2010	Rental Charges		
	Rental Period	Ex VAT	Inc. VAT
Permanent Service - New Line	Annual	£396.00	£475.20
Temporary Service			
Infrequently Used Sites	First Month or Part Month	£79.00	£94.80
	Each Additional Month	£40.00	£48.00
	Each Week or Part Week, up to 4 Weeks	£20.00	£24.00
Frequently Used Sites	Each Additional Month or Part Month	£40.00	£48.00

¹ The rental charge includes all network apparatus up to and including the Network Termination Point

4. Telex Ancillary Services

Please note that Telex is no longer available for new supply.

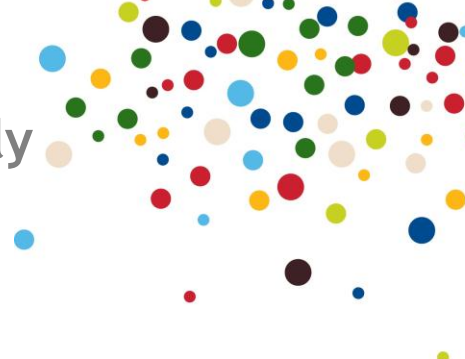
Description 01/01/10	Quarterly Rental	
	Ex VAT	Inc. VAT
Exchange Facilities		
Changed Number Intercept	£6.75	£8.10
Incoming / Outgoing Lines	£0.00	
Caller Identification (Answerback facility)	£0.00	
Directories	£0.00	

The Hull Area Telephone and Telex Directory (Combined Alpha/Classified) is published annually. KC allows a free entry in respect of each telex exchange line. The entry shall first appear in the telex directory in the next issue in which it is practicable to include it.



Proud to be part
of local life

Telex - Not Available for New Supply



5. Telex Call Charges

Please note that Telex is no longer available for new supply.

All calls are subject to a minimum charge of 4.5p exc. VAT (5.29 inc. VAT)

Inland Calls - Dialed Direct

Code 01/01/10	Type Of Call (See Note 1)	Operative Date	4.5p Ex VAT (5.29 Inc. VAT) Dialed Metered Unit
A	Local Calls *	01/09/2000	60 secs
B	National Calls	01/10/2000	30 secs

* Local calls are calls originating from a 59xxxx (Hull) telex number range and terminate on destination numbers in the 59xxxx, 52xxxx (Scarborough) or 57xxxx (York) number range.

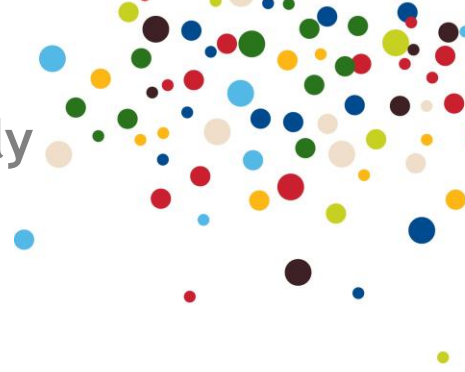
6. International Calls - Dialed Direct

Charge Band 01/01/2010	Pence Per Second	
	Ex VAT	Inc. VAT
1	0.350	0.420
2	0.383	0.460
3	0.400	0.480
4	0.550	0.660
5	0.633	0.760
6	0.900	1.080
7	0.967	1.160
8	1.167	1.400
9	1.350	1.620
10	1.533	1.840
11	1.667	2.000
12	1.750	2.100
13	1.917	2.300
14	2.033	2.440
15	2.133	2.560
16	2.200	2.640
17		



Proud to be part
of local life

Telex - Not Available for New Supply



18		
19		
20		
21		
22		
23		

7. Notes

Great Britain is divided into telex charging areas, each of which has a nominated "Telex Centre".

The countries covered by the International Telex Charge Bands are as follows:

Charge Band	Countries
1	Denmark, France, Republic of Ireland, Monaco,
2	Austria, Belgium, Finland, Germany, Greece, Netherlands, Norway, Sweden, Yugoslavia,
3	Azores, Balearic Islands, Bosnia, Canary Islands, Croatia, Czech Republic, Faroe Islands, Hungary, Italy, Liechtenstein, Luxembourg, Macedonia, Madeira, Poland, Portugal, San Marino, Slovak Republic, Slovenia, Spain, Switzerland, Vatican City
4	Albania, Algeria, Andorra, Bulgaria, Estonia, Moldova, Tunisia, Turkey, Ukraine, Uzbekistan
5	Armenia, Azerbaijan, Belarus, Cyprus, Georgia, Kyrgyz Republic, Latvia, Libya, Lithuania, Malta, Morocco, Romania, Russia, Tadjikistan, Turkmenistan,
6	Alaska, Australia, Canada, Gibraltar, USA
7	Israel
8	Hong Kong, India, Malaysia, Singapore,
9	Bermuda, Kazakhstan, Mexico,
10	Bahrain, Iceland, Sri Lanka,
11	Bahamas, Barbados, Ghana, Mauritius, Montserrat, Netherlands Antilles, Papua New Guinea, St Kitts-Nevis, Turk & Caicos Islands, Zimbabwe
12	Anguilla, Antigua, Bangladesh, Bhutan, Cayman Islands, Japan, Korea South, Norfolk Island
13	Cameroon, Cuba, Dominican Republic, Ecuador, Guadeloupe, Macao, Malawi, Martinique, New Zealand, Nicaragua, Niger, Puerto Rico, Qatar, St Pierre et Miquelon, Sudan, Tanzania, Uganda, Vanuatu, Virgin Islands (USA)
14	Brazil, Falkland Islands, Gambia, Guyana, Haiti, Jordan, Kenya, Maldive Islands, Philippines, St Helena, South Africa, Surinam, Venezuela



Proud to be part of local life

Telex - Not Available for New Supply



15	Argentine, Ascension, Belize, Benin, Burkina Faso, Cote d'Ivoire, Dominica, Hawaii, Liberia, Nigeria, Panama, St Lucia, St Vincent, Solomon Islands, Taiwan, Thailand, Transkei
16	Abu Dhabi (UAE), Amman (UAE), Bophuthatswana, Burundi, Central African Republic, Chad, Chile, China People's Republic, Congo People's Republic, Dubai (UAE), Equatorial Guinea, French Guiana, French Polynesia, Fujairah (UAE), Guatemala, Guinea, Honduras, Kuwait, Lebanon, Mali, Mayotte Is, New Caledonia, Reunion, Sharjah (UAE), Umm al Qaiwan (UAE), United Arab Emirates, Yemen
17	El Salvador, Ethiopia, Indonesia, Jamaica, Seychelles, Syria, Virgin Islands (British)
18	Gabon, Iraq, Myanmar, Namibia (SW Africa), Oman, Samoa (USA), Saudi Arabia
19	Greenland, Iran, Kiribati, Korea People's Democratic Republic, Madagascar, Mongolia, Nepal, Pakistan, Paraguay, Somali Democratic Republic, Zambia
20	Angola, Bolivia, Brunei, Cambodia, Cape Verde Is, Colombia, Comoro Islands, Costa Rica, Diego Garcia, Djibouti, Egypt, Fiji, Grenada, Guam, Guinea Bissau, Laos, Marshall Islands, Mauritania, Micronesia, Mozambique, Nauru Island, Niue Islands, Palau, Peru, Rwanda, Saipan, Swaziland, Tuvalu, Uruguay, Vietnam, Wallis & Futuna Islands,
21	Afghanistan, Christmas Islands, Cocos Islands, Cook Islands, Eritea, Lesotho, Sao Tome et Principe, Senegal, Sierra Leone, Tonga, Zaire, Inmarsat C
22	Botswana, Samoa (Western), Togo, Trinidad & Tobago, Inmarsat B
23	Inmarsat A